



LESOTHO REVENUE AUTHORITY

CUSTOMS DIVISION

ASYCUDA WORLD SEAT NOTES FOR Proceed to Border

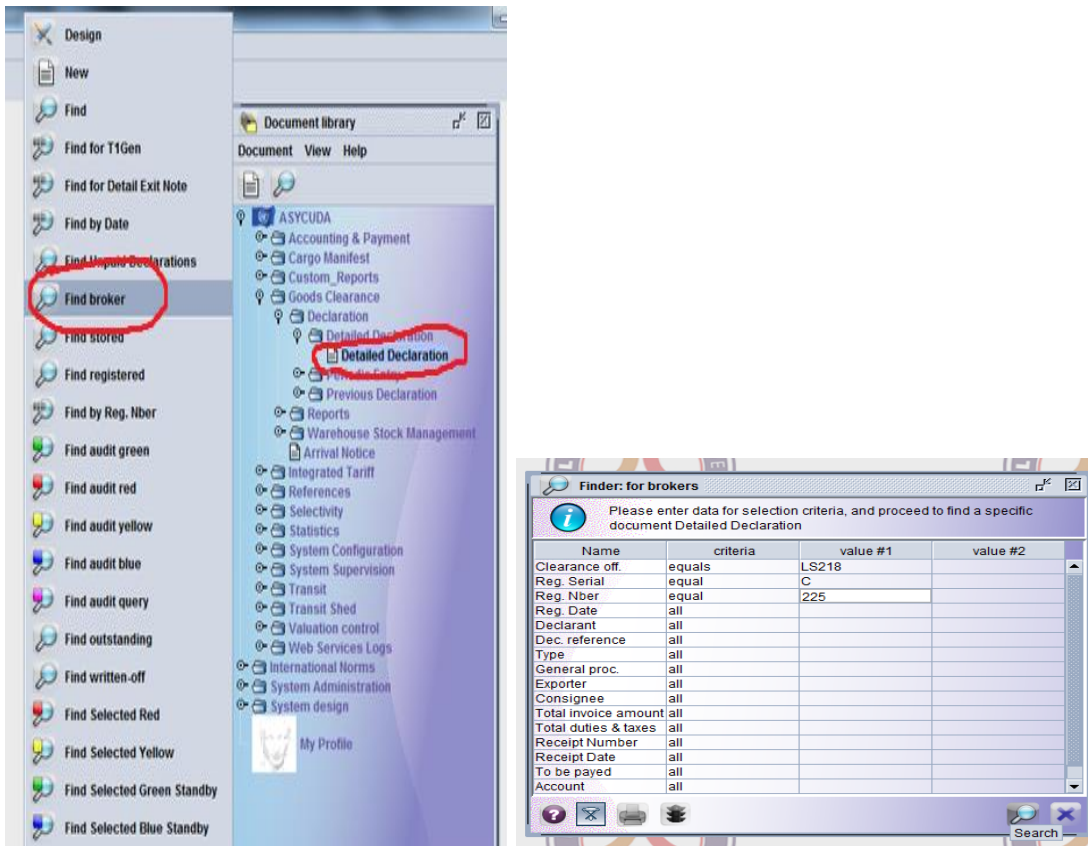
Compiled by: Functional Team

Date: October 2015

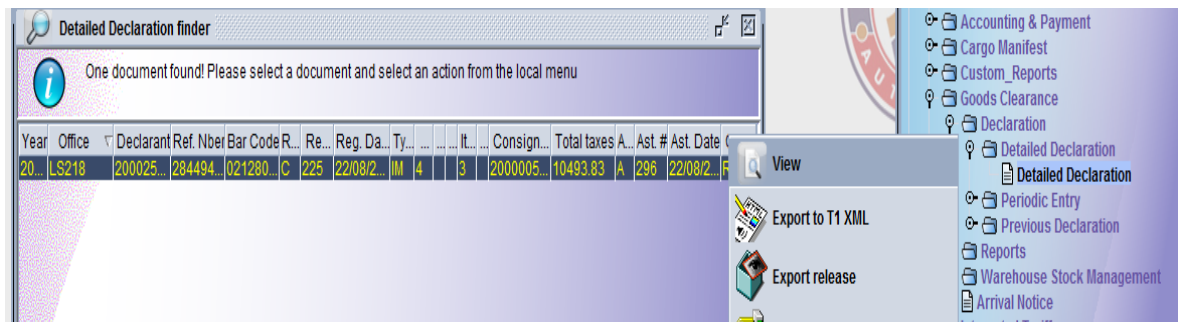
These Seats Notes serve to guide declarants on how to access the P2B through another option besides the mail. This shall be through the Print Proceed to Border icon on the SAD 500 form.

To access the Print P2B icon, the steps are:

- Find broker



- View declaration



- Print P2B from icon on the SAD

Print Proceed to Border

| | | | | | |
|---|--|--------------------------------------|--|---|--|
| 2 Exporter UNILEVER SOUTH AFRICA (PTY) LTD NDLOVU PARK DURBAN RSA | | 1 DECLARATION IM 4 | | A OFFICE OF DESTINATION LS218 Maseru Bridge Border Post | |
| 8 Consignee BROWNS CASH AND CARRY (PTY) LTD CORNER SENATE AND LEPOGO ROADS INDUSTRIAL AREA SITE #6 | | 3 Forms 1 2 | | 4 Load List C 225 22/08/2015 | |
| 14 Declarant BLACKIE'S CONSULTANTS (PTY) LTD MAIN NORTH 1 CATHEDRAL CAPTAIN DOREGOS BUILDING | | 5 Items 3 | | 6 Nbr packages 182 | |
| 18 Identity and nationality of means of transport at arrival NKR34963 | | 9 Financial No. | | 7 Reference number 2015 28449466 | |
| 21 Identity and nationality of active means of transport crossing the border | | 10 Ctr. <input type="checkbox"/> | | 11 Trading 0.00 | |
| | | 15 Country of export South Africa | | 12 Value details 0.00 | |
| | | 16 Country of origin South Africa | | 13 C.A.P. | |
| | | 19 Ctr. <input type="checkbox"/> | | 15 C.E. Code ZA | |
| | | 20 Delivery terms FOB | | 17 C.D. Code LS | |
| | | | | 17 Country of destination Lesotho | |
| | | | | 22 Currency & total amount invoiced | |
| | | | | 23 Exch. rate | |
| | | | | 24 Nature of | |

S.A.D. Val. Note Asmt. Notice Info. Page Att. Doc. Scan. Doc.

Document library Detailed Declar... Detailed Declaratio...

Note: The Proceed to Border Notice shall be displayed on the screen for a declaration that has gone through all necessary Clearance processes.